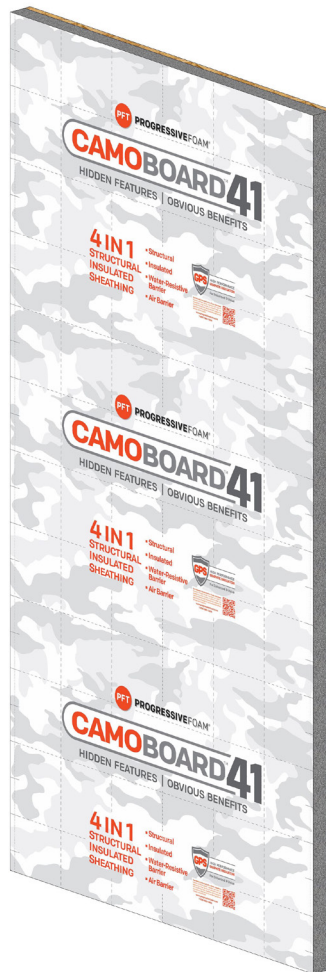


# CAMOBORD™41



## INSTALLATION INSTRUCTIONS

# Table of Contents

---

1.0	Product Description .....	3
2.0	Precautions for Handling, Storage & Installation.....	4
3.0	Installation .....	4
4.0	Inspection & Repairs .....	7
5.0	Example Wall Section Details .....	8
6.0	Simplified Bracing Tables for CAMOBOARD Structural Insulated Sheathing...	13
7.0	Warranty.....	14
8.0	Disclaimer & Limitation of Liability .....	14

## 1.0 Product Description

---

CAMOBORD™ Structural Insulated Sheathing is a structural wall sheathing comprised of a proprietary foam plastic insulating sheathing adhered to a wood structural panel and may be used as wall sheathing for multi-family or residential construction.

### 1.1 FEATURES

CAMOBORD™ Premium Graphite Polystyrene Versatile Rigid Insulation is a film-faced, graphite-enhanced foam that provides continuous insulation, is water resistant, and serves as an air barrier.

The wood structural panel component is available as a 7/16" thick oriented strand board (OSB).

### 1.2 BENEFITS

Provides continuous insulation, with reduced thermal breaks.

Increases the R-value of wall assemblies that cannot be achieved with cavity insulation alone.

Acts as a water-resistive barrier – eliminates the need for house wrap when the joints are sealed and taped. This reduces air leakage and ensures that moisture transmission through the cladding will drain to the outside.

Serves as a direct replacement of wall sheathing panels in braced wall construction.

### 1.3 AVAILABLE SIZES

Available in 4ft x 8ft, 4ft x 9ft, sheets.

### 1.4 NOMINAL THICKNESS

CAMOBORD™ is available in R3.5, R5.5, and R8.0 insulating values. The graphite enhanced foam is 0.59", 1.02", and 1.55" thick, respectively. Total nominal thicknesses for CAMOBORD™ panels are:

1.4.1 1.00", 1-1/2", and 2.00" thick with 7/16" OSB as the structural backer.

## 2.0 Handling, Storage & Installation

---

Precautionary measures taken in packaging, storage, transportation, and installation of CAMOBOARD™ products can help minimize the potential for damage to the products.

### 2.1 JOBSITE STORAGE AND HANDLING

Always keep stored CAMOBOARD™ products tarped or covered to protect from the weather. If possible, store indoors. Store CAMOBOARD™ elevated from the ground and protected from moist conditions. Ensure that CAMOBOARD™ is maintained flat and level in storage.

## 3.0 Installation

---

Installation may vary depending on project-specific requirements. Before starting, make sure all installation complies with local building code requirements.

### 3.1 FASTEN CAMOBOARD™ TO THE WALL SUBSTRATE

CAMOBOARD™ is fastened directly to the wooden studs and framing members of a wall with a nominal thickness not less than 2" (51mm) and spaced a maximum of 24" (610mm).

CAMOBOARD™ must be installed with the length of the panels parallel to the wall framing (typically vertical) and all panel edges supported by framing or blocking.

CAMOBOARD™ sheathing joints shall be tightly butted at framing members, and a single row of fasteners must be applied to all panel edges into the framing behind.

### 3.2 FASTENING CAMOBOARD™

Attach CAMOBOARD™ to framing with a maximum of 6" o.c. (152mm) between fasteners along the edge and 12" o.c. (304mm) between fasteners in the field. Fasteners shall be a minimum of 0.113" x 2-3/8" nails with a 1" minimum embedment into studs. Nails shall be countersunk into the foam where the nail head is flush with the structural backer. Fastener edge distance is a minimum of 3/8" (9.5mm).

Where hold-down straps are used, install structural sheathing first, remove foam at the strap's location, then install the strap over the face of the structural sheathing backer and attach per the manufacturer installation instructions. Replace foam if possible and seal with tape.

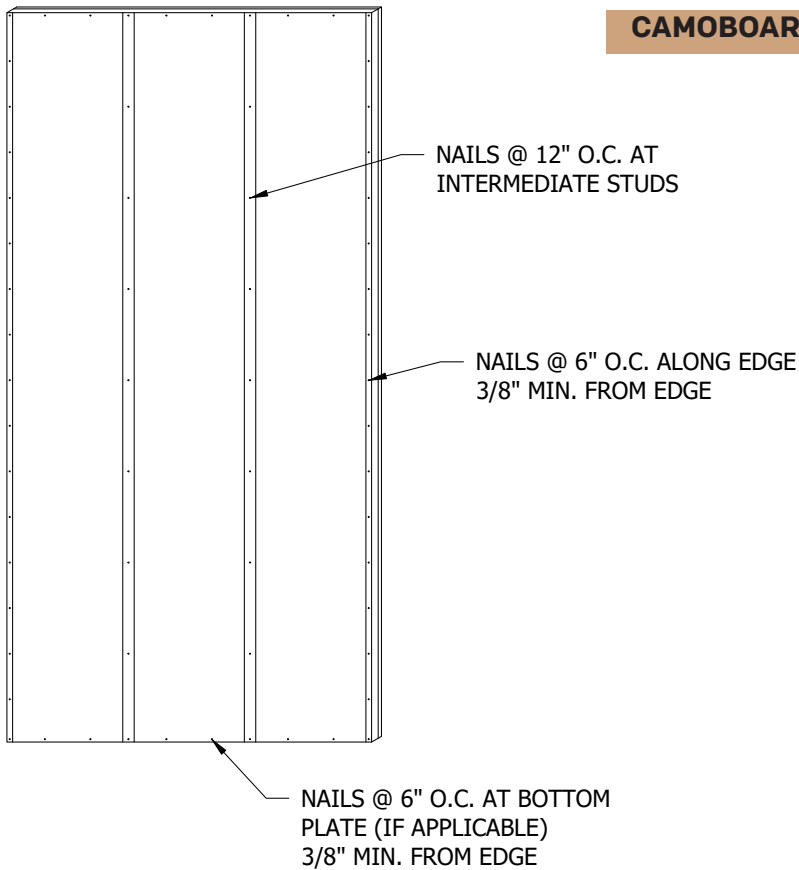
Gypsum wallboard shall be a minimum 1/2" in thickness and installed to the interior of the wall framing, with a minimum of #6 x 1-1/4" Type W or S screws or 5d cooler nails. The fastener spacing shall be a maximum of 8" o.c. (76 mm) along the edges and in the field. Fastener edge distance for gypsum wallboard is a minimum

of 3/8" (9.5mm).

Do not tack CAMOBOARD™ to framing, but fasten each panel completely once fastening begins.

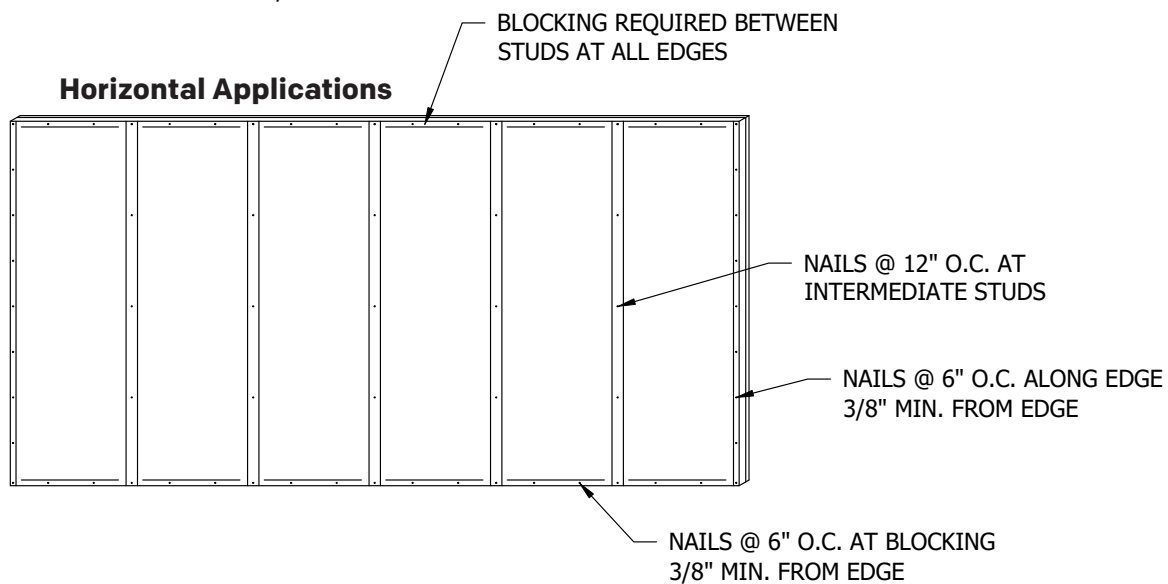
### 3.3 LIMITATIONS

#### Vertical Applications



#### CAMOBOARD™ Fastening Installation Details

#### Horizontal Applications



CAMOBOARD™ panels and joint sealant tape should be installed in temperatures between 0° F and 120° F (-17° C and 48° C).

### 3.4 SEALING JOINTS

**Joint Fastening:** CAMOBOARD™ panels should be sealed so that a proper water-resistive barrier (WRB) is achieved. 3M 8777 joint sealant tape [or an approved AMMA 711 Tape or Flashing] must be used to qualify as an approved WRB.

*\*Sealant cannot replace the Tape for Joint Sealing*

**Nail Penetrations:** To maintain the WRB protective layer, all penetrations shall be covered with an approved AMMA 711 Tape or an approved AMMA 713 Sealant to maintain WRB status.

### 3.5 NAIL GUN

The Jenco Nail Gun has been uniquely designed to pair with CAMOBOARD™, providing nozzle tips for the R-3 [3.5], R-5 [5.5], and R7.5 [8.0] Designs. Use a test section to dial in the air compression rating.



*Start with 70 -120 psi [pounds per square inch]. May need to test some areas of the product to dial in the specific air pressure before starting the job.*

### 3.6 NAIL PENETRATION DEPTH

Nails must be properly set to the outward-facing wood sheathing. The head of the nail shall be seated directly onto the wood sheathing. No gaps between the nail head and the wood sheathing shall be detected. 2 3/8" [two and three eighths inch] nails shall be used with each thickness of CAMOBOARD™.

*\*A depth gauge can be used to determine whether the nails are seated in the wood.*

### 3.7 CUTTING CAMOBOARD™ PANELS

CAMOBOARD™ panels can be cut using a standard wood composite panel cutting blade. While cutting CAMOBOARD™, ensure a straight and clean-cut line.

## 4.0 Inspection & Repairs

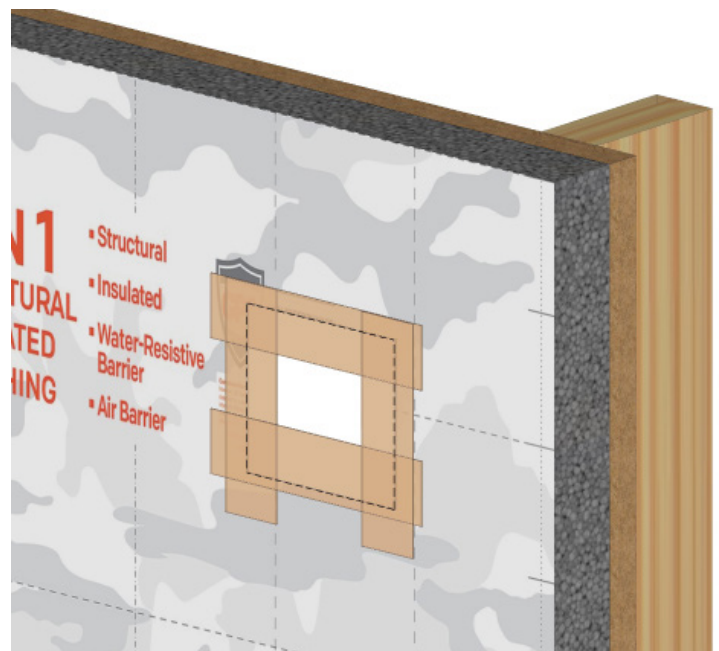
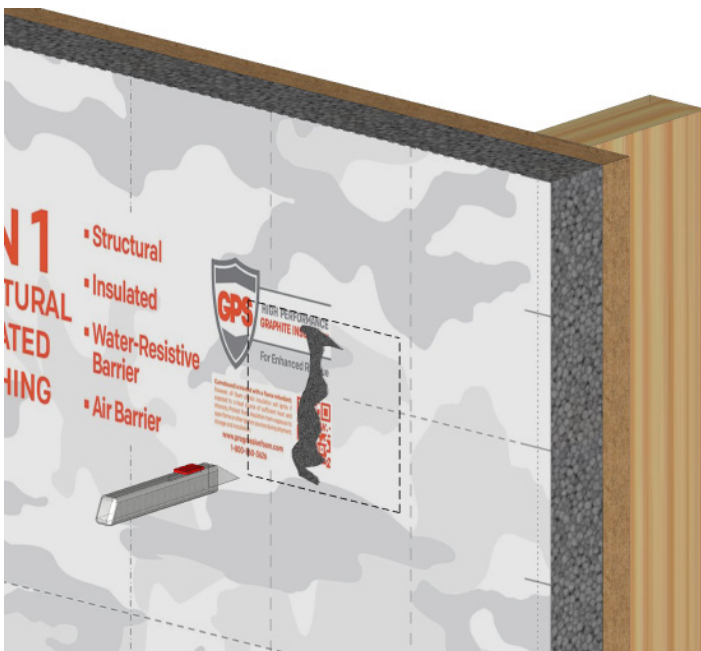
---

Inspect installed CAMOBOARD™ panels sufficiently in advance of cladding or strapping placement to ensure:

- Taped seams are not broken.
- Joints, penetrations and perimeter are properly sealed.
- Damaged areas are marked and properly repaired.

In most cases repairing damaged CAMOBOARD™ panels simply requires tape sealing over the damaged area. Large bruises and field damage should be repaired with seam tape.

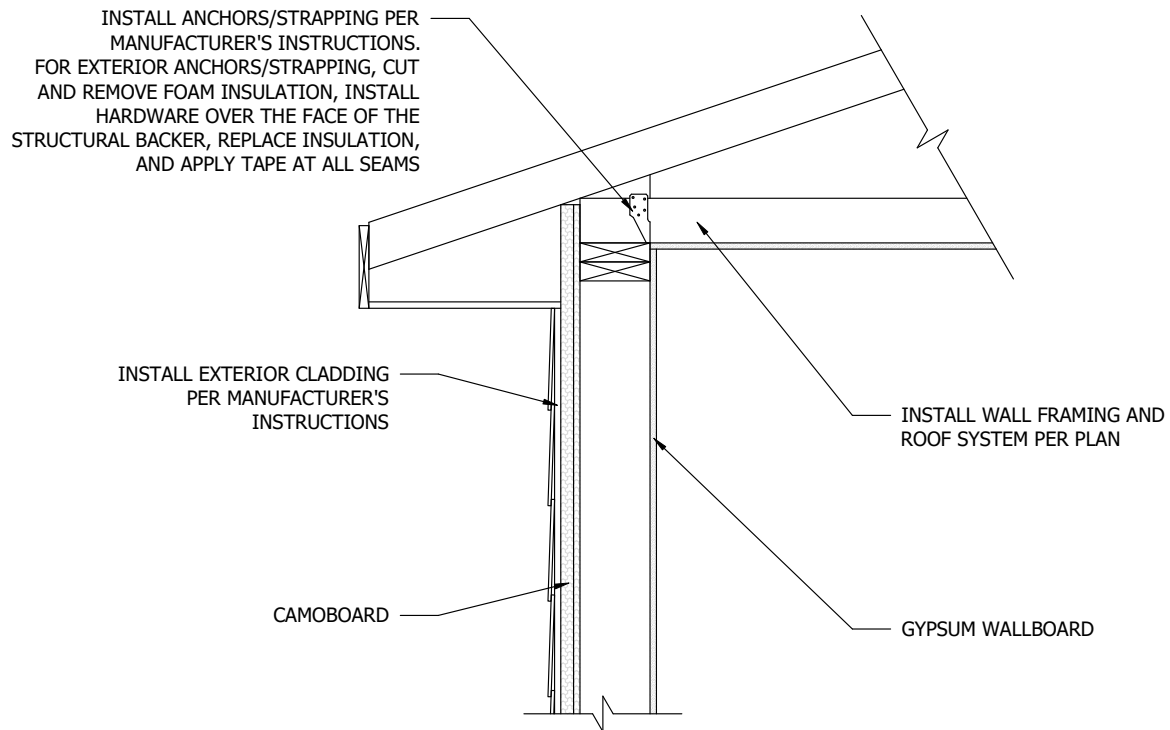
Large field damage can be repaired with cut-to-size foam sheets secured with seam tape.



## 5.0 Example Wall Section Details

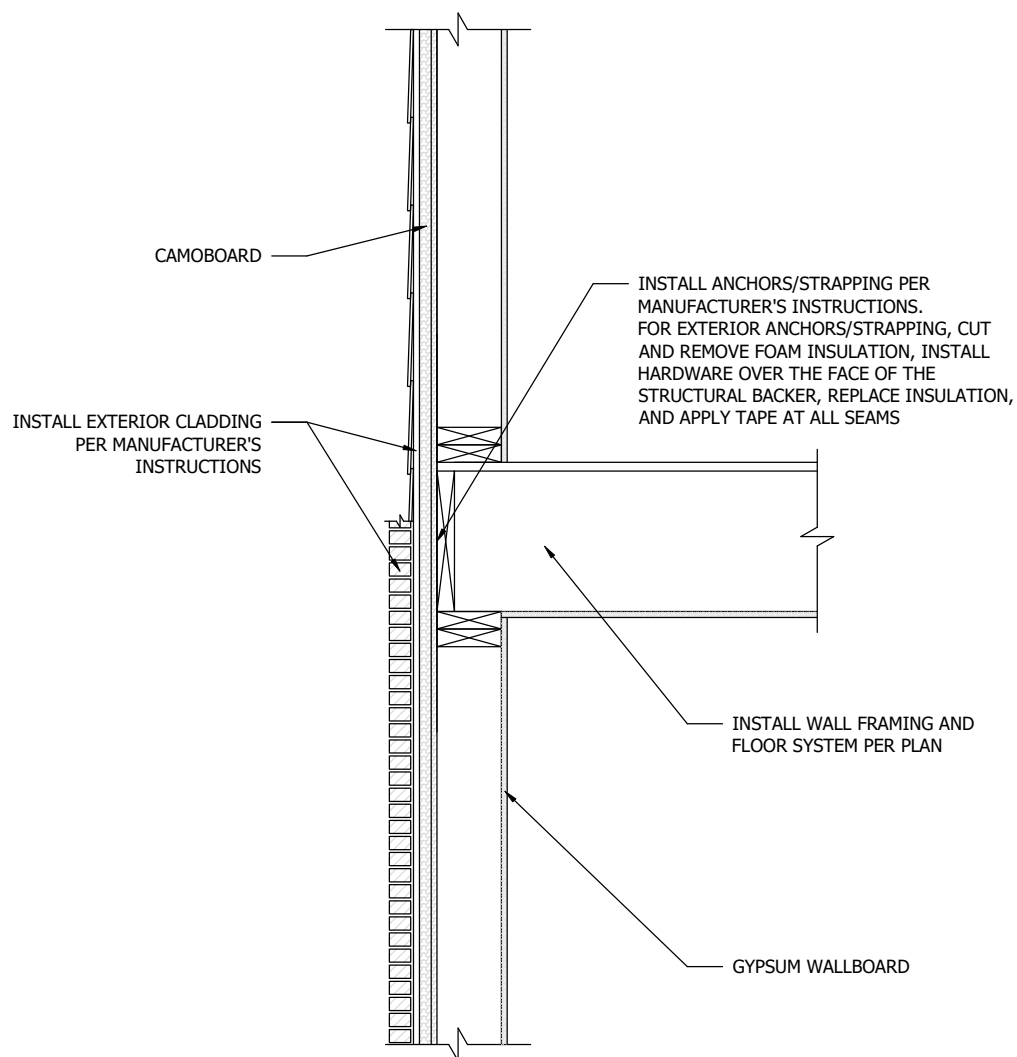
---

### Typical wall section at roof

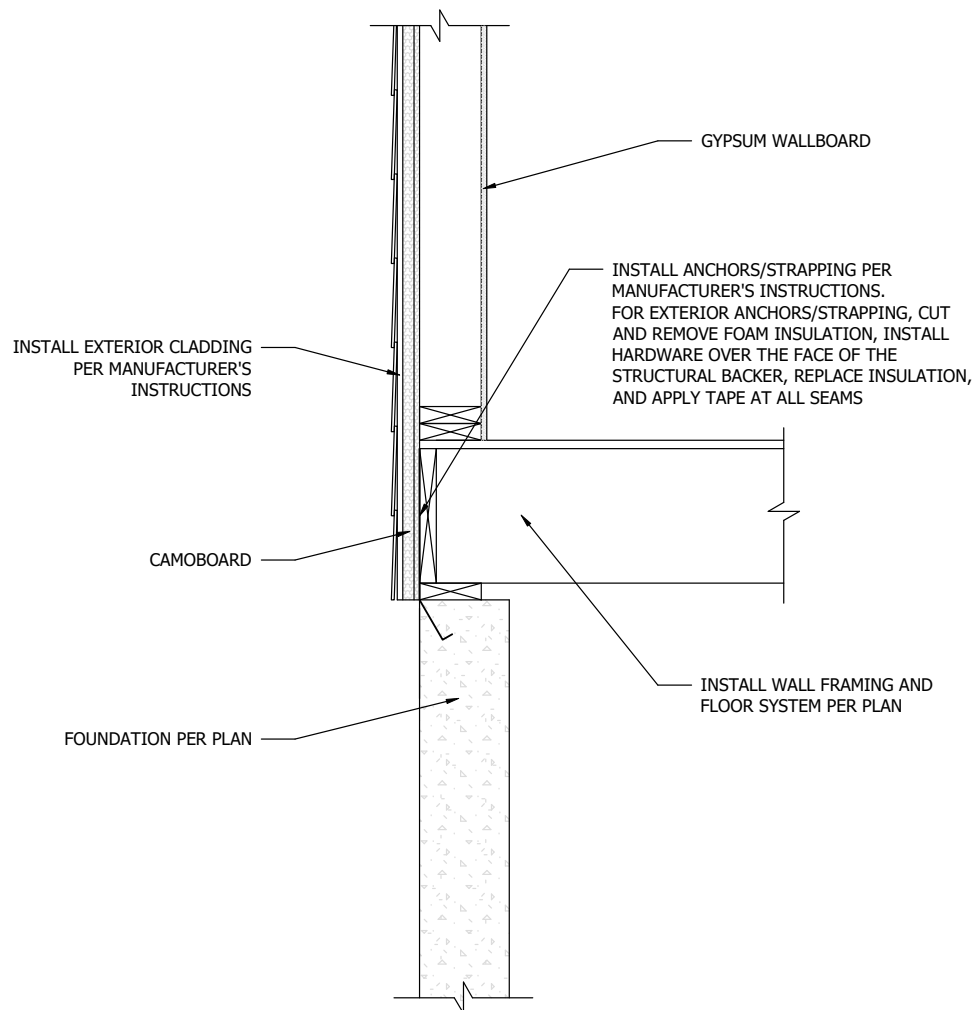




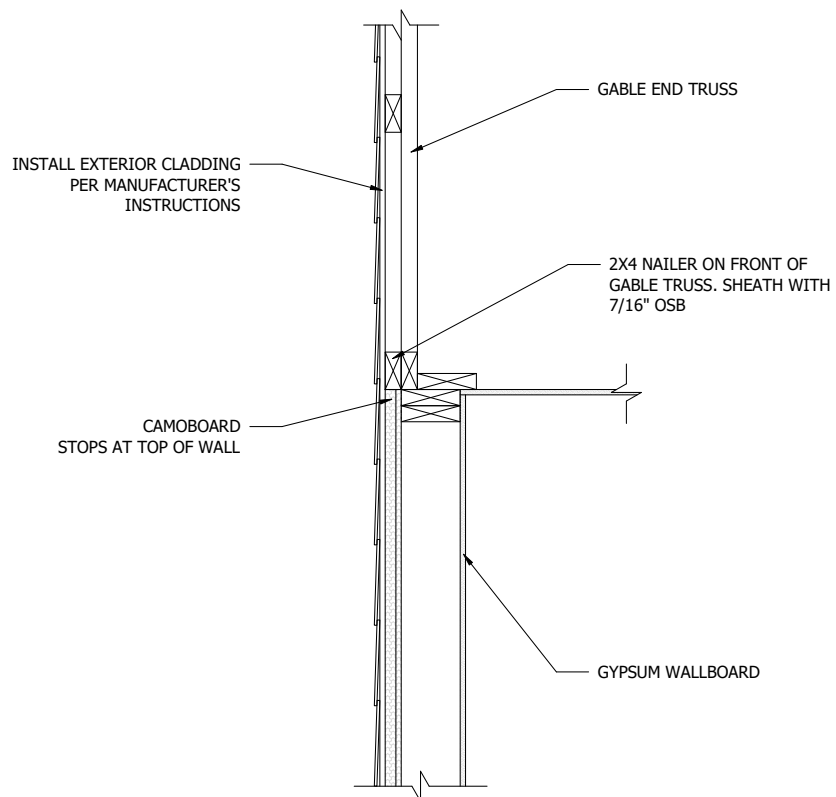
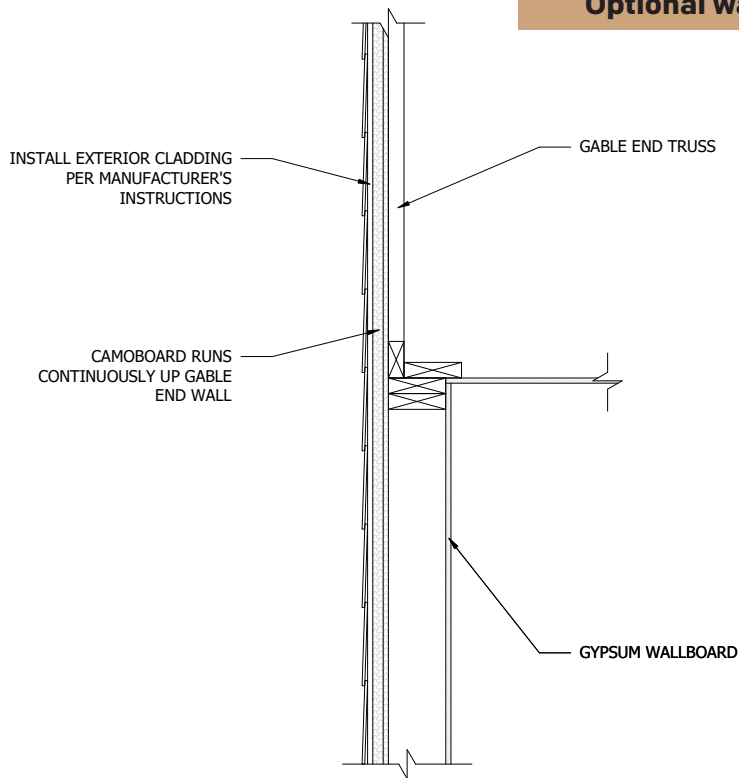
**Typical wall section at floor deck**



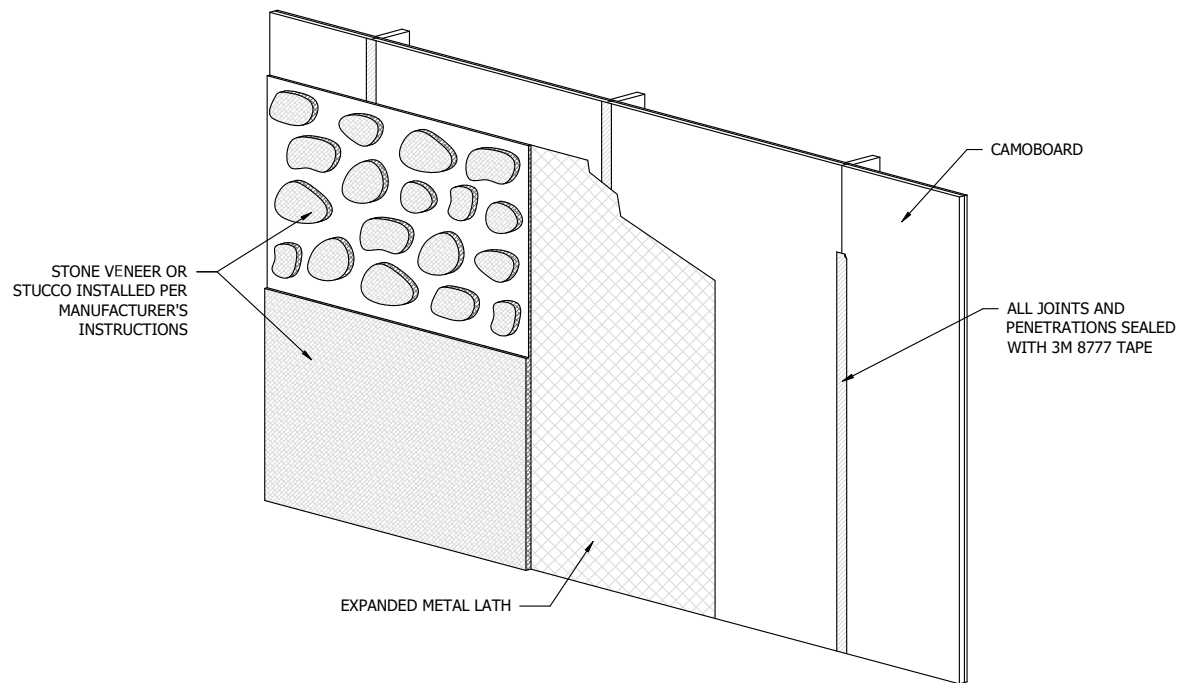
## Typical wall section at foundation



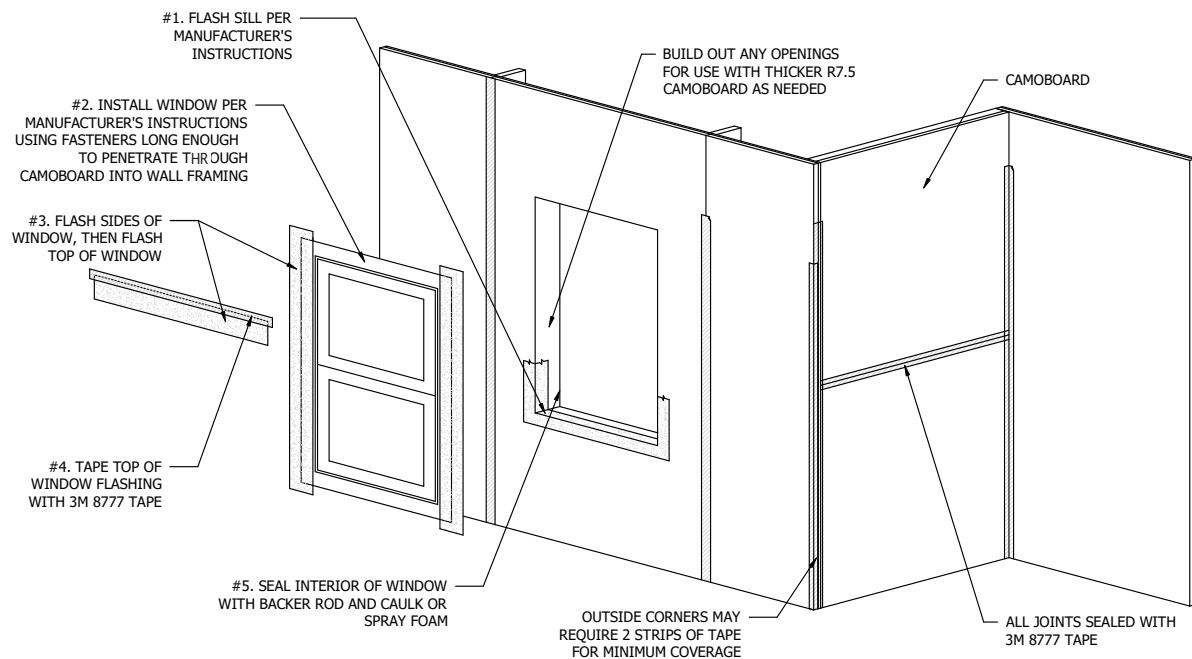
## Optional wall sections gable end wall at roof truss



## Stone and Stucco Details



## Window and Tape Details



## 6.0 Simplified Bracing Tables for CAMOBOARD™ Structural Insulated Sheathing

Simplified Bracing Tables for 7/16" OSB is shown in Table 1.

See **TER-2406-111** for more details.

**TABLE 1.** CAMOBOARD™ SIS 7/16" OSB, Simplified Bracing Table – Foam Out Orientation<sup>1,2,3,4,5,6,7</sup>

Structural Sheathing Product	Ultimate Design Wind Speed, $V_{ult}$ (mph)	Story Level	Eave to Ridge	Minimum Number of Bracing Units Required (Long Side)						Minimum Number of Bracing Units Required (Short Side)					
				Length of Short Side (ft)						Length of Long Side (ft)					
				10	20	30	40	50	60	10	20	30	40	50	60
CAMOBOARD SIS (Foam Out) 7/16" OSB	115	One Story or Top of Two or Three Stories	10	1	1	2	2	2	3	1	1	2	2	2	3
		First of Two Story or Second of Three		1	2	3	3	4	5	1	2	3	3	4	5
		First of Three Stories		2	3	4	5	6	7	2	3	4	5	6	7
		One Story or Top of Two or Three Stories	15	1	1	3	3	3	4	1	1	3	3	3	4
		First of Two Story or Second of Three Stories		1	2	3	3	5	6	1	2	3	3	5	6
		First of Three Stories		2	3	4	6	7	8	2	3	4	6	7	8
	130	One Story or Top of Two or Three Stories	10	1	2	2	2	3	3	1	2	2	2	3	3
		First of Two Story or Second of Three Stories		2	2	3	4	5	6	2	2	3	4	5	6
		First of Three Stories		2	3	5	6	7	8	2	3	5	6	7	8
		One Story or Top of Two or Three Stories	15	1	3	3	3	4	4	1	3	3	3	4	4
		First of Two Story or Second of Three Stories		2	2	3	5	6	7	2	2	3	5	6	7
		First of Three Stories		2	3	6	7	8	9	2	3	6	7	8	9

## 7.0 Warranty

---

The full warranty can be found at [www.progressivefoam.com](http://www.progressivefoam.com)

## 8.0 Disclaimer & Limitation of Liability

---

The statements and data contained in this document prepared by Progressive Foam Technologies, Inc. (PFT) are for general information purposes ONLY. They are NOT specific technical recommendations as to any particular design or application and the ultimate determination as to product suitability is the sole responsibility of the installer or end user. However, for any PFT product to properly perform, it must be explicitly installed in the manner described herein. Any warranty is void if there is any deviance from these installation instructions, or any use of PFT products in any other manner unless described herein and will not be honored by PFT. All warranties, conditions and other terms implied by statute or common law are excluded to the maximum extent permitted by applicable laws. Unless expressly provided, this Web Site and the information and products and services available on is delivered "as is" without warranty of any kind. We do not warrant or represent that the products and services (or the information, material or services supplied to us on which all or part of the products and services depends) will be delivered free of any inaccuracies, interruptions, delays, omissions or errors ("Faults"), or that all Faults will be corrected. We shall not be liable for any loss, damage or cost resulting from any such Faults. You assume sole responsibility and entire risk as to the suitability and results obtained from use of the products and services, and any decisions made or actions taken based on the information contained in or generated by the Service. You are solely responsible for the preparation, content, accuracy and review of any documents, data, or output prepared or resulting from the use of the products and services. In no event shall PFT or its third-party providers be liable for any penalties, interest or taxes assessed by any governmental or regulatory authority. Although the information herein, including PFT product descriptions, is believed to be correct at the time of publication, accuracy cannot be guaranteed, and results may vary depending on the design and/or application. PFT fully reserves the right to make product specification changes, without notice or obligation, and to modify or discontinue any of its products at any time. In no event, shall PFT be liable for any direct, indirect, or consequential damages of any kind arising from information contained in this bulletin, including, but not limited to, claims for loss of profits, business interruption, or damages to business reputation. This limitation of liability shall apply to all claims whether those claims are based in contract, tort, or any legal cause of action. When penetrating or adhering to a PFT product, PFT recommends referring to the attachment and membrane manufacturers to secure additional direction on installation method and material compatibility. Fastening connections should be designed to withstand all the combined applied loads, including but not limited to dead-load and wind-load. Where applicable, consideration should be given to seismic-load, and live load (not covered in this guide). It is the responsibility of the manufacturers of the fastenings or adhesives to comment on the performance of their products when managing the loads of PFT insulation materials and other assembly components. PFT makes no representations or warranties, express or implied, with respect to its recommendations for attaching the semi-rigid and rigid board products and all warranties are disclaimed.

# **CONTACT US**

**Progressive Foam Technologies**

1-800-860-3626 • [info@progressivefoam.com](mailto:info@progressivefoam.com) • [www.progressivefoam.com](http://www.progressivefoam.com)