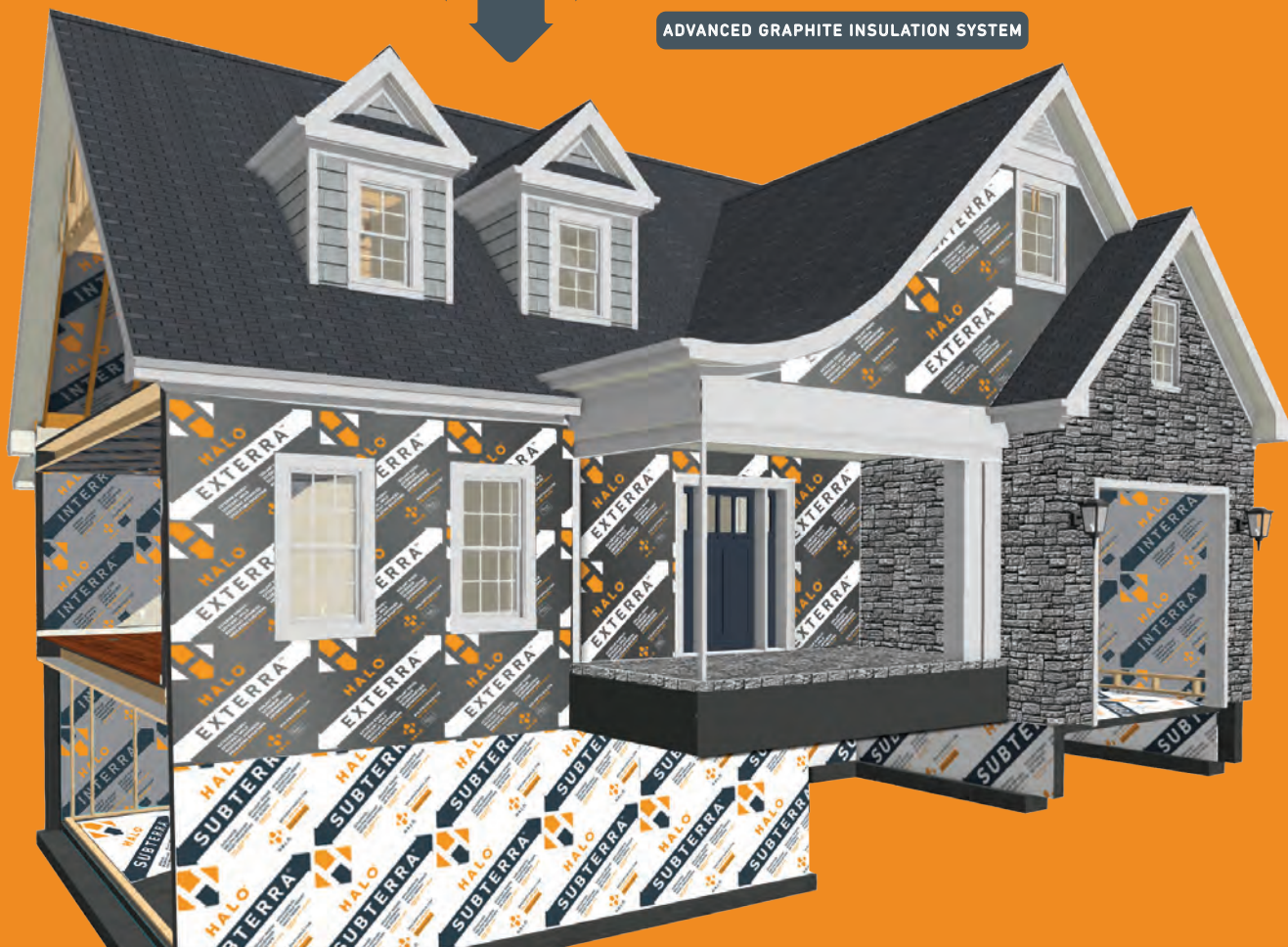




HALO®

ADVANCED GRAPHITE INSULATION SYSTEM

Powered by
R-5 Technology!



Make the Switch to Today's Most Advanced Graphite Insulation System!

Halo® offers a breakthrough graphite insulation system that is perfectly designed for three customized applications:

EXTERRA®

ADVANCED BREATHABLE
EXTERIOR
INSULATING SHEATHING

SUBTERRA®

ADVANCED
BELOW-GROUND
RIGID INSULATION

INTERRA®

ADVANCED REFLECTIVE
INTERIOR
RIGID INSULATION

BUILDWITHHALO.COM

MADE OF
Graphite Polystyrene





DESIGNED FOR EXTERIOR APPLICATIONS

- Halo® GPS (graphite polystyrene) delivers a long-term R-5 per nominal inch*
- Continuous GPS insulation creates a thermal break
- Perforated laminate allows vapor to escape the wall assembly
- It's breathable — walls stay dry and healthy
- Built-in water-resistive barrier**
- Water is kept to the exterior

*Thermal performance claim based on a thickness of 1-1/16".

**When joints and fasteners are taped (see the Halo® Installation Guide).

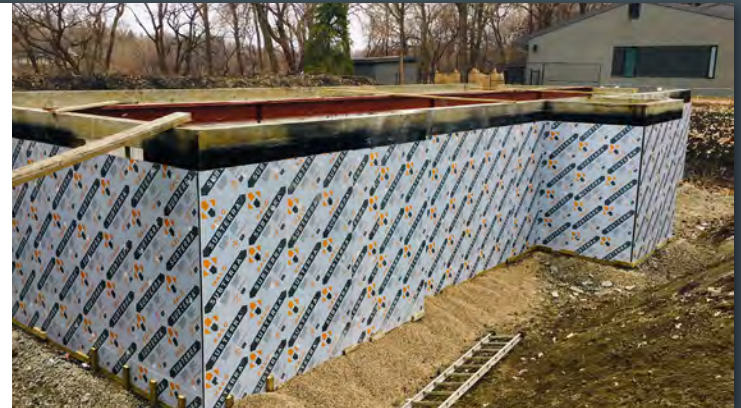


DESIGNED FOR BELOW-GROUND APPLICATIONS

- Halo® GPS (graphite polystyrene) delivers a long-term R-5 per nominal inch*
- Available with a thick polypropylene laminate or an extra-tough cross-woven laminate (Subterra® Plus)
- Per the NRC's Radon Diffusion test, Subterra Plus is a radon barrier with 7 times higher radon resistance than 6 mil polyethylene membranes.
- Continuous GPS insulation creates a thermal break
- Protects waterproofing
- Exterior laminate helps drain water away from the foundation wall
- It's job site tough — withstands severe foot and equipment traffic without breaking
- Built-in water-resistive barrier**

*Thermal performance claim based on a thickness of 1-1/16".

**When taped.

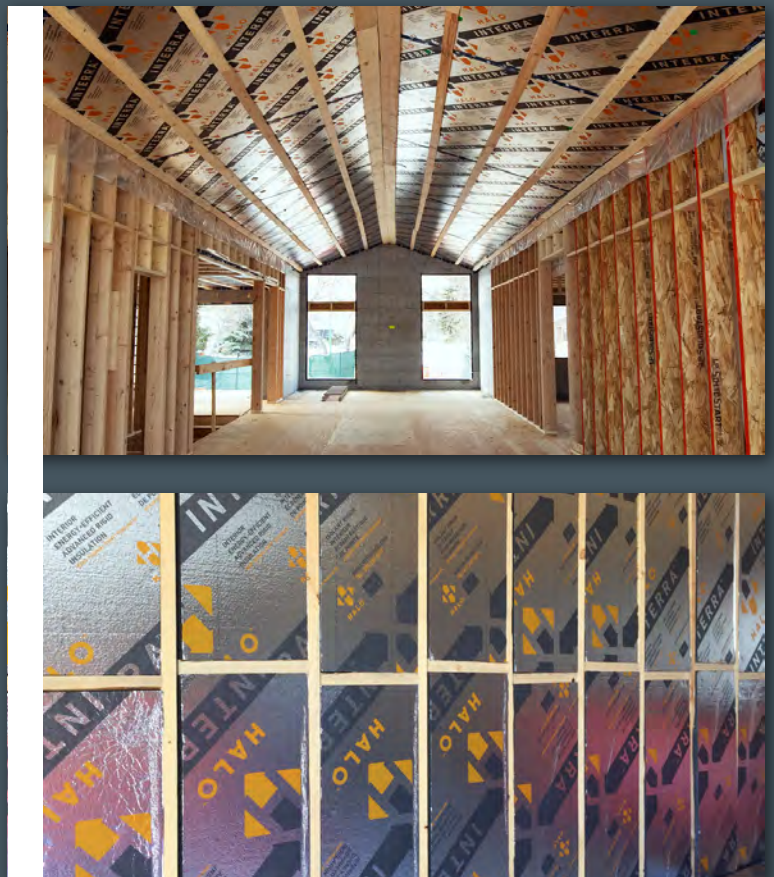




DESIGNED FOR INTERIOR APPLICATIONS

- Halo® GPS (graphite polystyrene) delivers a longterm 5 per nominal inch*
- Continuous GPS insulation creates a thermal break
- Built-in vapor barrier**
- Reflective laminate reflects heat back into the home or building***
- Interra® FR is now regionally available and is specially formulated to not require a thermal or ignition barrier (in the USA only) when installed on any interior wall surface.****

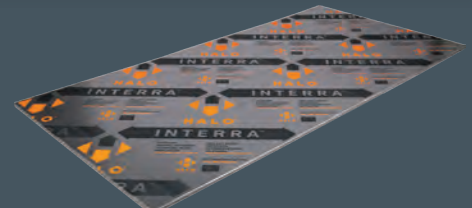
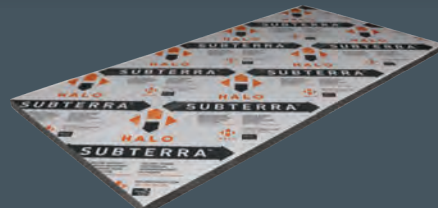
• Thermal performance claim based on a thickness of 1 1/16". **When taped. ***When an appropriate air space is provided. **** Provided Type XI Halo Interra FR is installed at a maximum thickness of 2.28". Based on testing to NFPA 286 in accordance with IBC 2015, Section 2603.9 and IRC 2015, Section 316.6. (Not available in all regions)



ZERO THERMAL DRIFT. ZERO COMPROMISE.

- Graphite Polystyrene (GPS) provides R-5 per nominal inch*.
- GPS provides a permanent long-term R-value and won't deteriorate over time like XPS and ISO.
- GPS delivers greater R-values at lower outside temperatures.
- Minimizes the energy loss from thermal bridging.
- Light yet durable — perfect for today's demanding jobsites.
- Superior indoor air quality due to Halo®'s clean steam-fused GPS core.
- GPS is 100% recyclable and ozone layer-friendly — no CFCs or HCFCs.

*Thermal performance claim based on a thickness of 1-1/16".



BUILDWITHHALO.COM



An innovation in insulation. Right to the very core.

Graphite Polystyrene (GPS) is the new standard in thermal insulation, thanks to millions of graphite infrared absorbers and heat reflectors that reduce thermal conductivity.

MORE CHOICE MEANS MAXIMUM PERFORMANCE.

Halo® Element	Board Size	Standard Thicknesses ¹	Guaranteed R-Value ²	Compressive Resistance ³ psi(KPa)
EXTERRA®	4' x 8' 1230mm x 2460mm	.563", .625", 1.0", 1.5", 2.0" 11mm, 13mm, 26mm, 38mm, 52mm	R-5 per nominal inch (based on thickness of 1-1/16")	10 (70)
SUBTERRA® (with polypropylene laminate)	4' x 8' 1230mm x 2460mm	1.0", 1.5", 2.0" 26mm, 38mm, 52mm	R-5 per nominal inch (based on thickness of 1-1/16")	16 (110) / 30 (210)
SUBTERRA® PLUS (with cross-woven laminate)	4' x 8' 1230mm x 2460mm	1.0", 1.5", 2.0" 26mm, 38mm, 52mm	R-5 per nominal inch (based on thickness of 1-1/16")	16 (110) / 30 (210)
INTERRA®	4' x 8' 1230mm x 2460mm	.625", 1.0", 1.5", 2.0" 13mm, 26mm, 38mm, 52mm	R-5 per nominal inch (based on thickness of 1-1/16")	10 (70)
INTERRA® FR	4' x 8' 1230mm x 2460mm	.625", 1.0", 1.5", 2.0" 13mm, 26mm, 38mm, 52mm	R-4.9 per nominal inch (based on thickness of 1-1/16")	5 (35)

¹Custom thicknesses and compressive strengths are available upon request. Please contact your local Halo® dealer or representative.

²Typically, XPS and ISO insulation products are not guaranteed to maintain their published R-values over time. Halo® meets or exceeds most XPS-guaranteed R-values (check the guaranteed R-value with your XPS supplier).

³Listed compression values are minimum requirements conforming to ASTM C578 and CAN/ULC S701. Halo® products meet or exceed the requirements of ASTM C578, "Standard Specification for Rigid, Cellular Polystyrene Thermal Insulation", and CAN/ULC S701, "Expanded Polystyrene Insulation Board and Pipe Covering".

HALO PACKAGING

Standard Bundle Size: 4' wide x 8' long x 1' deep

Board Thickness	No. of Boards/Bundle
.625"	20
1.0"	12
1.5"	8
2.0"	6

Installation Instructions: Please refer to the Halo® Installation Guide at BuildWithHalo.com or from your local Halo® dealer or representative.

ZERO THERMAL DRIFT GUARANTEE

The use of air as an insulating gas allows Graphite Polystyrene (GPS) to maintain its outstanding R-value performance over time and contributes to sustainable building practices. The air, graphite and polymer matrix in GPS are all stable and no fluorocarbons are used to make, or are contained within GPS. As a result, the R-value provided by GPS will not deteriorate. GPS has zero thermal drift and zero ozone depletion potential.

For details, visit BuildWithHalo.com.

MADE OF
Graphite Polystyrene



FOR MORE INFORMATION

Visit BuildWithHalo.com. • Call the Halo® hotline at 855.350.HALO (4256). • Call your local Halo® manufacturer below.

AMC Foam
Technologies Inc.
35 Headingley Rd.
Headingley, MB
R4H 0A8
877.789.7622

Beaver Plastics Ltd.
11581-272 St.
Acheson, AB
T7X 6E9
6333 Unsworth Rd.
Chilliwack, BC
V2R 5M3
888.453.5961

Progressive Foam
Technologies Inc.
6753 Chestnut Ridge
Rd.
Beach City, OH
44608
800.860.3626

Perma R Products Inc.
2604 Sunset Dr.
Grenada, MS
38901
106 Perma R Rd.
Johnson City, TN
37604
800.647.6130

Form Systems Inc.
330 Cain Drive
Haysville, KS
67060
888.838.5038

A PRODUCT BY
LOGIX
BRANDS
LogixBrands.com