

# PROBOARD<sup>®</sup> ULTRA<sup>™</sup>

PREMIUM GPS



Ultra Durable and  
Breathable Rigid  
Insulation



## Proboard<sup>®</sup> Ultra<sup>™</sup> with StayDry<sup>®</sup> Technology. A durable, high-performing breathable Water-Resistive Barrier.

### Long-term Thermal Performance

Proboard Ultra features High-Performance Graphite Polystyrene (GPS) that provides long-term R-5 performance per nominal inch.

*Based on a thickness of 1-1/16."*



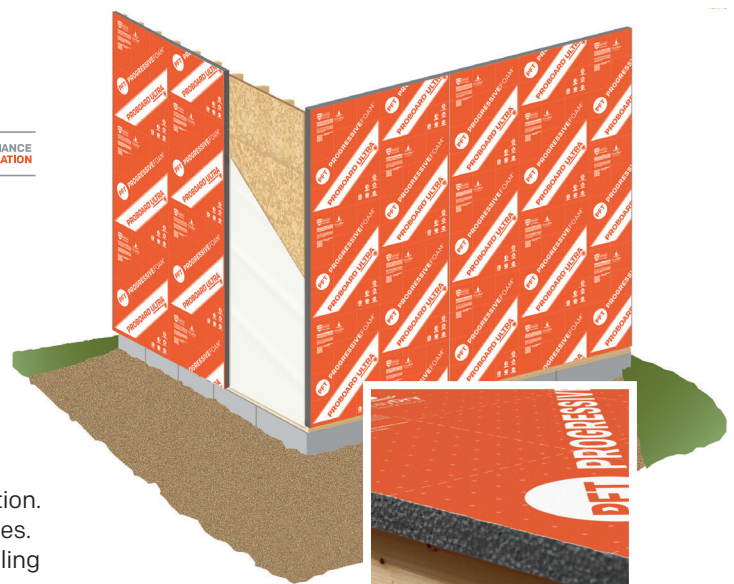
### Approved, Breathable Water-Resistive Barrier

Proboard Ultra is an approved, breathable Water-Resistive Barrier, featuring Class III semi-permeable vapor performance, eliminating the need for housewrap.



### Ultra exterior wall performance

Proboard Ultra meets code requirements for Continuous Insulation. It is specially engineered for above-grade exterior wall assemblies. Proboard Ultra can be installed in new construction and remodeling for both residential and light commercial projects.



**PROGRESSIVEFOAM<sup>®</sup>**

EXPECT EXTRAORDINARY

# 5 Great Reasons to use Proboard Ultra.

## 1 Ultra Moisture Management

Moisture is forever the enemy in construction. Some insulating sheathings products made of XPS insulation or EPS insulation with facers have perm ratings of 1.0 or less, making them Class II vapor retarders. **Proboard Ultra provides Class III semi-permeable performance** with our patented StayDry® Technology, making it about **3x more breathable** than comparable products.



- An approved, breathable Water-Resistive Barrier eliminating the need for housewrap
- GPS provides ultra-low moisture absorption even in wet conditions. Fast-drying characteristics, does not absorb moisture like other foam products.



## 2 Ultra Thermal Performance

**Proboard Ultra provides a powerful R-5 per nominal inch.\***

- Reflective back facer adds rigidity and boosts thermal performance (with appropriate air space)
- R-Hold™ Technology means permanent R-value performance



*\*Thermal performance claim based on a thickness of 1-1/16"*

## 3 Lightweight and Durable

**Proboard Ultra is lightweight yet durable—perfect for today's demanding job sites.**

- **Strong** GPS core strengthened with heavy-duty facers on both sides
- **Flexible** for easy installation
- Helps protect wall assembly
- **3x the strength** of standard EPS!



## 4 Fire Performance

**Flame retardant (ASTM E84/UL 723)**



## 5 Termite Resistance

**GPS is protected from insect degradation** and is safe for humans and pets.

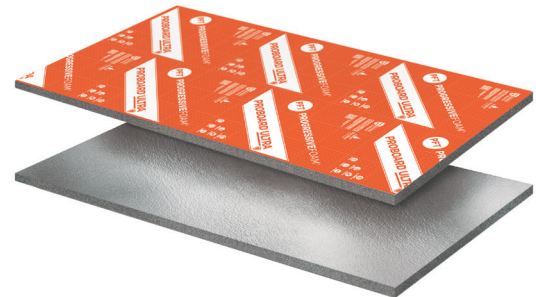
*Note: Product sold in Canada does not contain insect inhibitor*



## Specifications and Performance

### PROBOARD ULTRA™ PREMIUM GPS

<b>R-Value</b> @ 75° F, nominal 1.06" thickness <i>ASTM C518</i>	R-5	R-5
<b>Classification of Insulation Component</b>	<b>Type I</b>	<b>Type II</b>
<b>Compressive Strength</b> PSI (kPA) <i>ASTM D1621</i>	10	15
<b>Flexural Strength</b> PSI (kPA) <i>ASTM C203</i>	Up to 83	
<b>Density</b> lb/ft <sup>3</sup> (kg/m <sup>3</sup> ) [minimum] <i>ASTM D1622</i>	0.90	1.35
<b>Film Thickness</b>	2.5 mil	
<b>Water Absorption</b> <i>ASTM C272</i>	4.0	3.0
<b>Water Vapor Permeance</b> <i>ASTM E96</i> of 1.00 in thickness, Min, perm (ng/Pa•s•m <sup>2</sup> )	Varies 1.0–5.0	
<b>Vapor Retarder Classification</b> <i>ASTM E96</i>	<b>Class III</b>	<b>Class III</b>
<b>Water Penetration of Exterior</b> <i>ASTM E331</i> by Uniform Static Air Pressure Difference	Pass	Pass
<b>Flame Spread</b> <i>UL723</i>	5	5
<b>Smoke Development</b> <i>UL723</i>	25	25
<b>Standard Thickness:</b>	.59", .75", 1.02", 1.55", 2.09"	
<b>Standard Panel Sizes:</b>	2' x 8', 4' x 8'	



Learn more about Proboard Ultra

