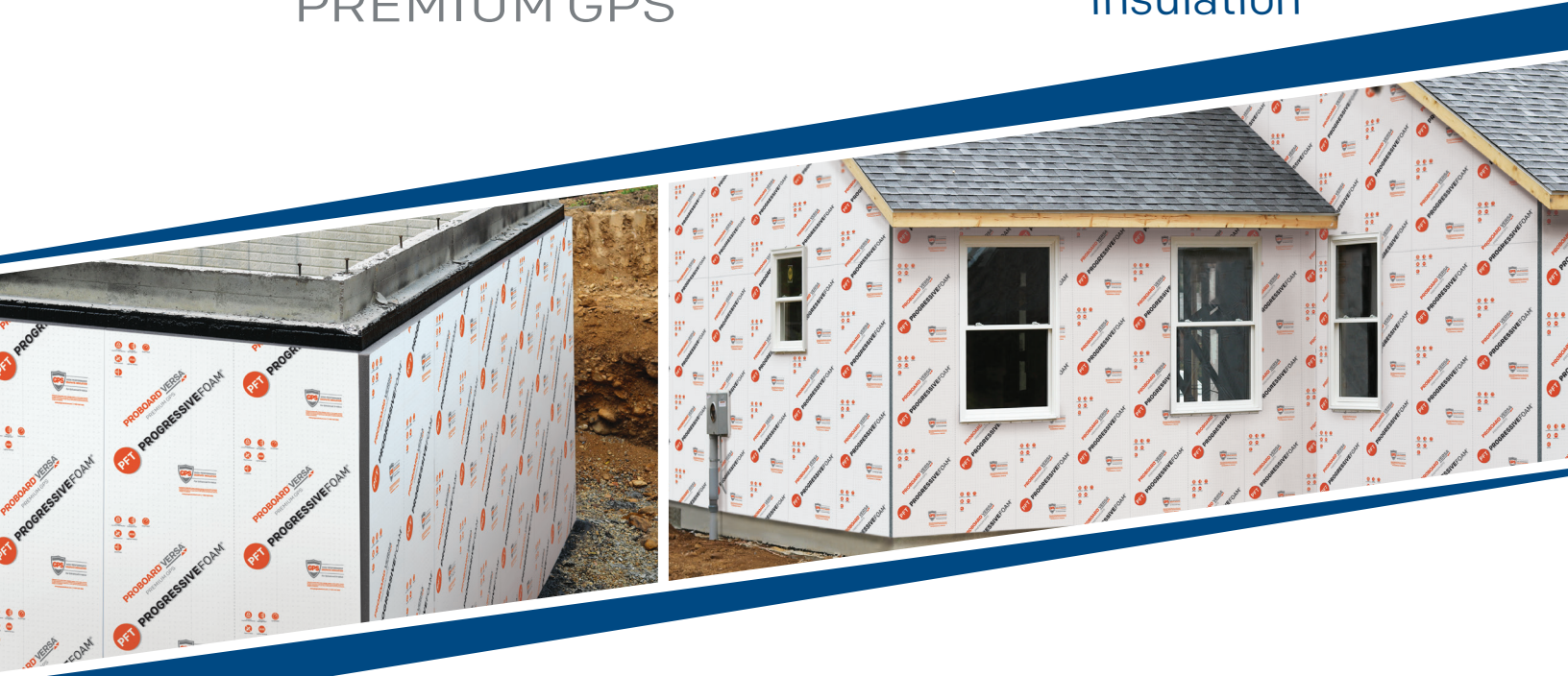


PROBOARD[®] VERSA[™]

PREMIUM GPS

Versatile Graphite
Polystyrene Rigid
Insulation



Meet Proboard[®] Versa[™], a versatile Continuous Insulation solution for above and below grade applications.

Long-term Thermal Performance

Proboard Versa features High-Performance Graphite Polystyrene (GPS), providing long-term R-5 performance per nominal inch.

Based on a thickness of 1-1/16."

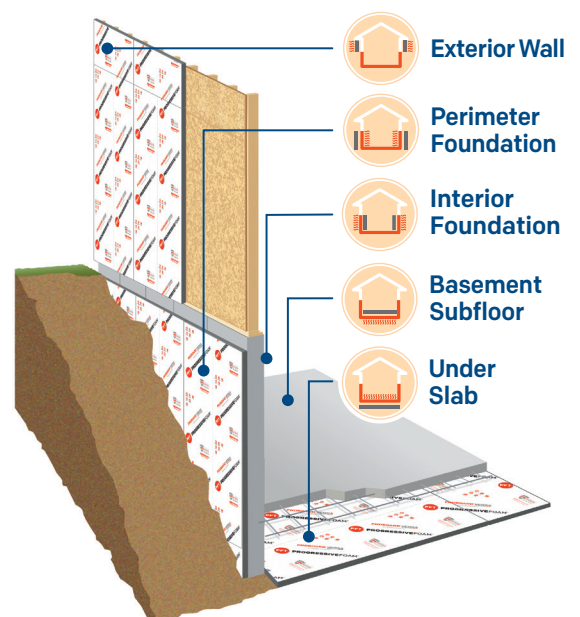


Approved Water-Resistive Barrier

Easy installation instructions turn Proboard Versa into an approved Insulated Water-Resistive Barrier, eliminating the need for housewrap.

Multi-Use Applications


Proboard Versa meets code requirements for Continuous Insulation and is perfect for above and below ground applications in both residential and light commercial projects.



5 Great Reasons to use Proboard Versa.


1 Long-term Thermal Performance

High-Performance Graphite Polystyrene (GPS) fuses the insulating power of air with millions of graphite particles, slowing the transfer of heat.

- **R-5 performance** per nominal inch based on a thickness of 1-1/16"
- **R-Hold™ Technology** ensures R-value performance remains permanent 
- **Zero off-gassing** results in lasting performance while supporting a healthier environment


2 Moisture Management

An approved **Insulated Water-Resistive Barrier**, Proboard Versa ensures the wall assembly remains dry.


- **Film facer** prevents water from penetrating the wall system 
- **No additional housewrap** needed
- **Easy-to-follow WRB installation techniques** are provided *Applicable on specific sizes and densities.*

3 Lightweight and Durable


Proboard Versa is perfect for demanding job sites

- **Reduced breakage** design includes front and back facers for added strength 
- **Flexible and light** for easy installation
- **Strong GPS core**

4 Fire Performance

Flame retardant (ASTM E84/UL 723) 

5 Termite Resistance

GPS is protected from insect degradation and is safe for humans and pets. *Note: Product sold in Canada does not contain insect inhibitor* 

Specifications and Performance

R-Value @ 75° F, nominal 1.06" thickness *ASTM C518*

Classification of Insulation Component

Compressive Strength PSI (kPA) *ASTM D1621*

Density lb/ft3 (kg/m3) [minimum] *ASTM D1622*

Flexural Strength PSI (kPA) *ASTM C203*

Water Vapor Permeance *ASTM E96*
of 1.00 in thickness, Min, perm (ng/Pa•s•m2)

Vapor Retarder Classification *ASTM E96*

Water Penetration of Exterior... *ASTM E331*
by Uniform Static Air Pressure Difference

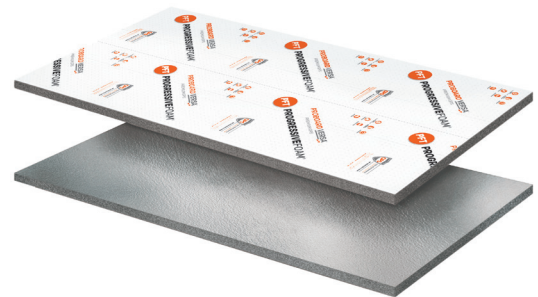
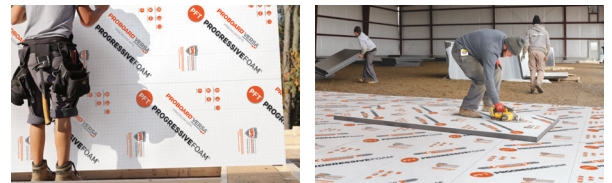
Flame Spread *ASTM E84*

Smoke Development *ASTM E84*

Foam Plastic Sheathing Panels Used as Water-Resistive Barriers [WRB] *AC71*

PROBOARD VERSA™ PREMIUM GPS

	R-5	R-5	R-5
Classification of Insulation Component	Type I	Type II	Type IX
R-Value @ 75° F, nominal 1.06" thickness <i>ASTM C518</i>	10	15	25
Compressive Strength PSI (kPA) <i>ASTM D1621</i>	10	15	25
Density lb/ft3 (kg/m3) [minimum] <i>ASTM D1622</i>	0.90	1.35	1.80
Flexural Strength PSI (kPA) <i>ASTM C203</i>	25	35	50
Water Vapor Permeance <i>ASTM E96</i> of 1.00 in thickness, Min, perm (ng/Pa•s•m2)	<0.1	<0.1	<0.1
Vapor Retarder Classification <i>ASTM E96</i>	Class I	Class I	Class I
Water Penetration of Exterior... <i>ASTM E331</i> by Uniform Static Air Pressure Difference	PASS	PASS	PASS
Flame Spread <i>ASTM E84</i>	5	5	5
Smoke Development <i>ASTM E84</i>	25	25	25
Foam Plastic Sheathing Panels Used as Water-Resistive Barriers [WRB] <i>AC71</i>	PASS	PASS	PASS



Standard Thickness: .59", .75", 1.02", 1.55", 2.0", 2.09", 3.0", 3.15"

Standard Panel Sizes: 4' x 8', 4' x 9'

Learn more about Proboard Versa

