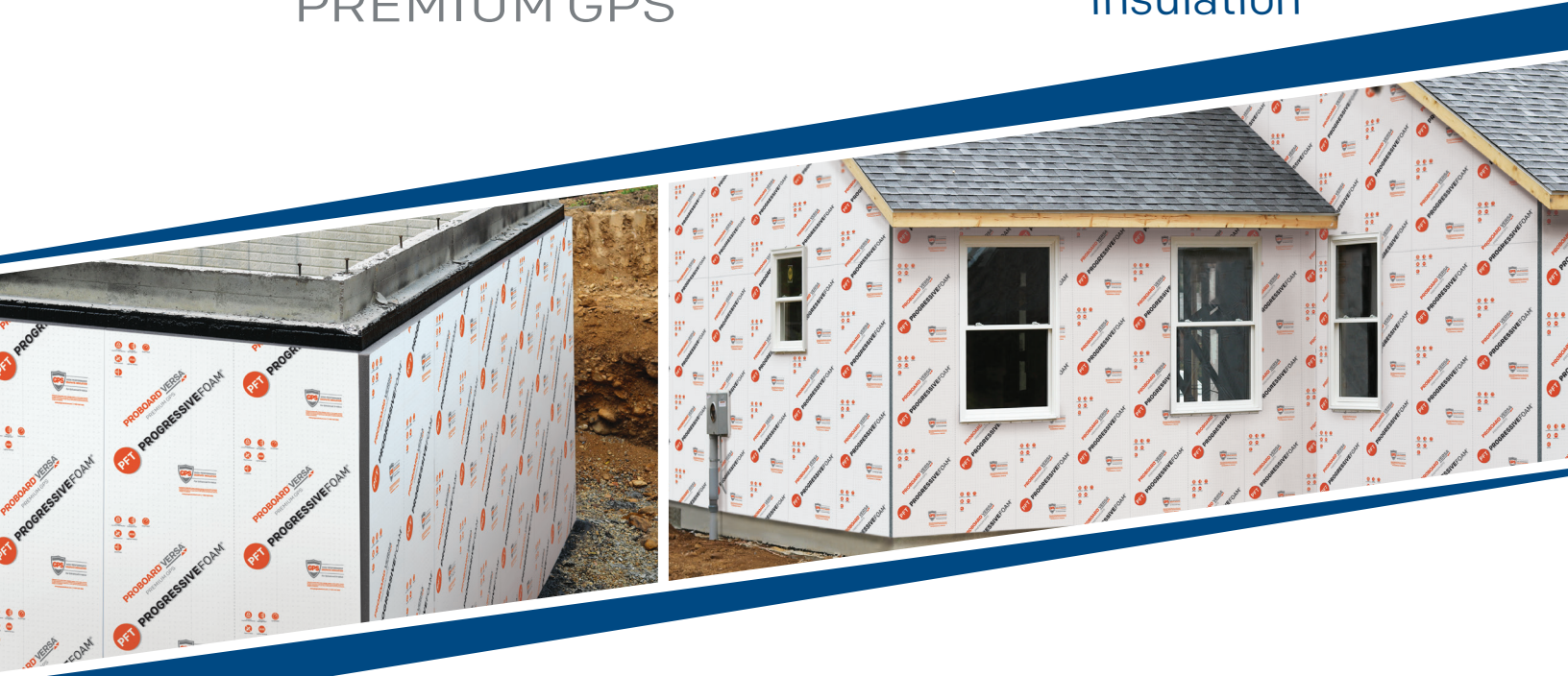


# PROBOARD<sup>®</sup> VERSA<sup>™</sup>

PREMIUM GPS

Versatile Graphite  
Polystyrene Rigid  
Insulation



## Meet Proboard<sup>®</sup> Versa<sup>™</sup>, a versatile Continuous Insulation solution for above and below grade applications.

### Long-term Thermal Performance

Proboard Versa features High-Performance Graphite Polystyrene (GPS), providing long-term R-5 performance per nominal inch.

*Based on a thickness of 1-1/16."*

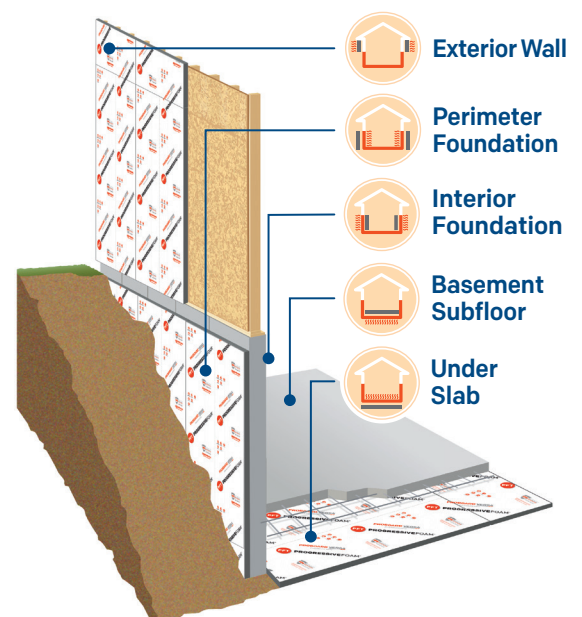


### Approved Water-Resistive Barrier

Easy installation instructions turn Proboard Versa into an approved Insulated Water-Resistive Barrier, eliminating the need for housewrap.

### Multi-Use Applications


Proboard Versa meets code requirements for Continuous Insulation and is perfect for above and below ground applications in both residential and light commercial projects.



# 5 Great Reasons to use Proboard Versa.


## 1 Long-term Thermal Performance

**High-Performance Graphite Polystyrene (GPS)** fuses the insulating power of air with millions of graphite particles, slowing the transfer of heat.

- **R-5 performance** per nominal inch based on a thickness of 1-1/16"
- **R-Hold™ Technology** ensures R-value performance remains permanent 
- **Zero off-gassing** results in lasting performance while supporting a healthier environment


## 2 Moisture Management

An approved **Insulated Water-Resistive Barrier**, Proboard Versa ensures the wall assembly remains dry.


- **Film facer** prevents water from penetrating the wall system
  - **No additional housewrap** needed
  - **Easy-to-follow WRB installation techniques** are provided 
- Applicable on specific sizes and densities.*

## 3 Lightweight and Durable


Proboard Versa is perfect for demanding job sites

- **Reduced breakage** design includes front and back facers for added strength 
- **Flexible and light** for easy installation
- **Strong GPS core**

## 4 Fire Performance

**Flame retardant** (ASTM E84/UL 723) 

## 5 Termite Resistance

**GPS is protected from insect degradation** and is safe for humans and pets. *Note: Product sold in Canada does not contain insect inhibitor* 

## Specifications and Performance

**R-Value** @ 75° F, nominal 1.06" thickness *ASTM C518*

**Classification of Insulation Component**

**Compressive Strength** PSI (kPA) *ASTM D1621*

**Density** lb/ft3 (kg/m3) [minimum] *ASTM D1622*

**Flexural Strength** PSI (kPA) *ASTM C203*

**Water Vapor Permeance** *ASTM E96*  
of 1.00 in thickness, Min, perm (ng/Pa•s•m2)

**Vapor Retarder Classification** *ASTM E96*

**Water Penetration of Exterior...** *ASTM E331*  
by Uniform Static Air Pressure Difference

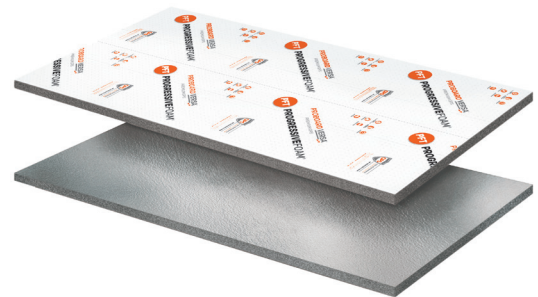
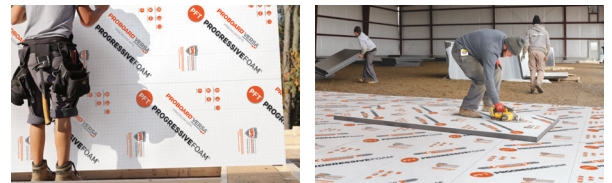
**Flame Spread** *ASTM E84*

**Smoke Development** *ASTM E84*

**Foam Plastic Sheathing Panels Used as Water-Resistive Barriers [WRB]** *AC71*

## PROBOARD VERSA™ PREMIUM GPS

	R-5	R-5	R-5
Classification of Insulation Component	Type I	Type II	Type IX
<b>Compressive Strength</b> PSI (kPA)	10	15	25
<b>Density</b> lb/ft3 (kg/m3)	0.90	1.35	1.80
<b>Flexural Strength</b> PSI (kPA)	25	35	50
<b>Water Vapor Permeance</b>	<0.1	<0.1	<0.1
Vapor Retarder Classification	Class I	Class I	Class I
<b>Water Penetration of Exterior...</b>	PASS	PASS	PASS
<b>Flame Spread</b>	25	25	25
<b>Smoke Development</b>	300	300	300
<b>Foam Plastic Sheathing Panels Used as Water-Resistive Barriers [WRB]</b>	PASS	PASS	PASS



**Standard Thickness:** .59", .75", 1.02", 1.55", 2.0", 2.09", 3.0", 3.15"

**Standard Panel Sizes:** 4' x 8', 4' x 9'

Learn more about Proboard Versa

